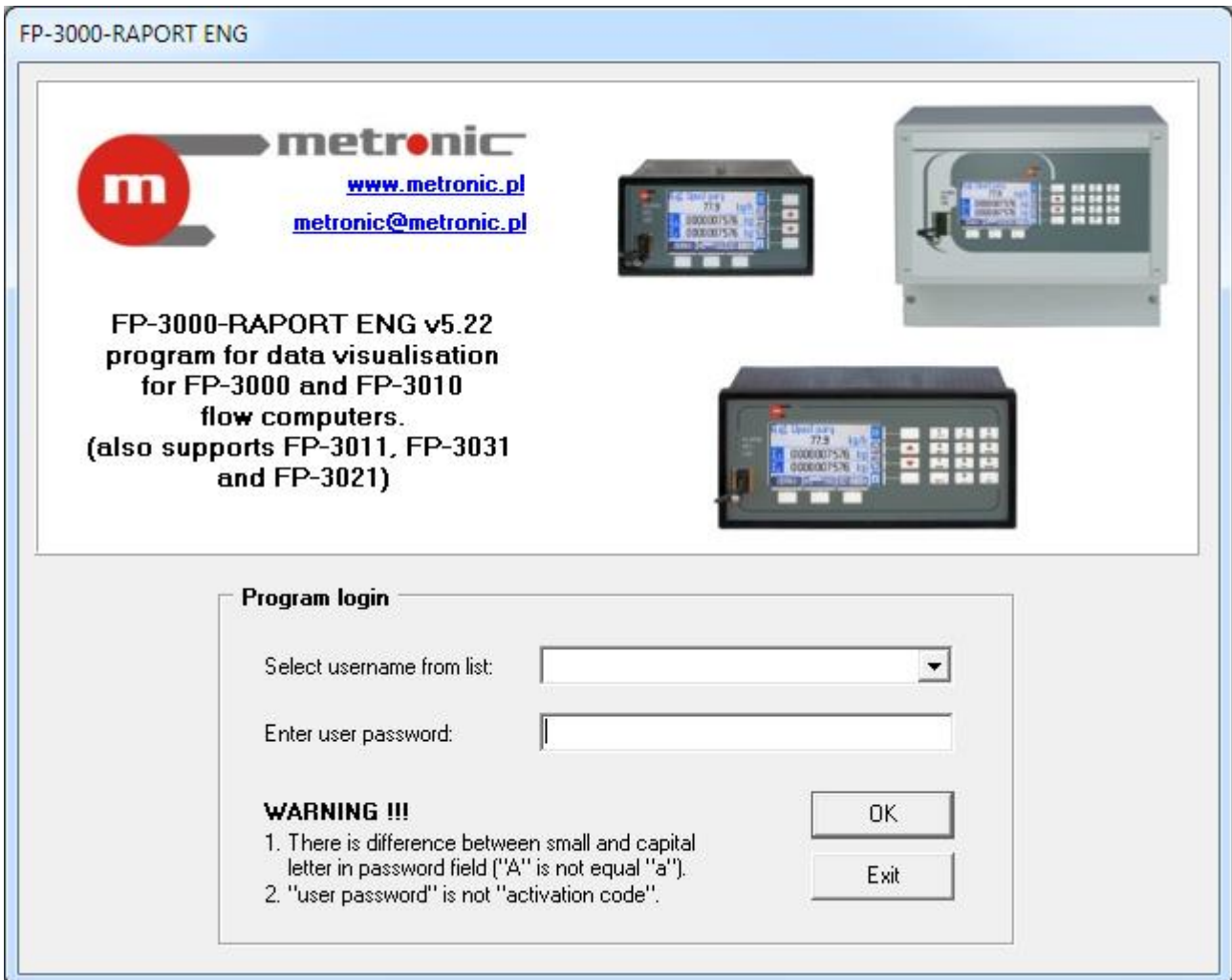


FP-3000-Raport

version 5.22



FP-3000-Raport

USER MANUAL

Version: 190319EN

TABLE OF CONTENTS

1	Hardware requirements	3
2	Log.....	3
3	Program registration	4
4	Adding/delete user, changing the administrator password.....	4
5	Analysis and visualization data from computer hard disc	4
5.1	Information about file.....	4
5.2	Combine data files	6
5.3	File control.....	7
5.4	Data selection	7
5.5	Determination of extremes	10
5.6	Preparation of reports: graphs.....	14
5.7	Preparation of reports: tables	17
6	Remote reading of measurement data	19
6.1	Transmission settings	19
6.2	Visualisation settings	20
6.3	Odczyt wyników bieżących	21
6.4	Reading from device registers	23
6.5	Reading data from MMC/SD card / internal memory	25
6.6	Archive commands	28
7	Entity launching the product on European Union market	29

! Before using the software, refer to the instruction manual.

■ All functions of the software are subject to modifications for the benefit of technical progress.

1 Hardware requirements

minimum:	screen resolution, mode DPI settings operating system RAM	1024 x 768, colour 96 dpi (normal size) WINDOWS 98 256 MB
optimal:	screen resolution, mode DPI settings operating system RAM	1280 x 1024, colour 96 dpi (normal size) WINDOWS XP / Vista / 7 / 8 512 MB or more

2 Log

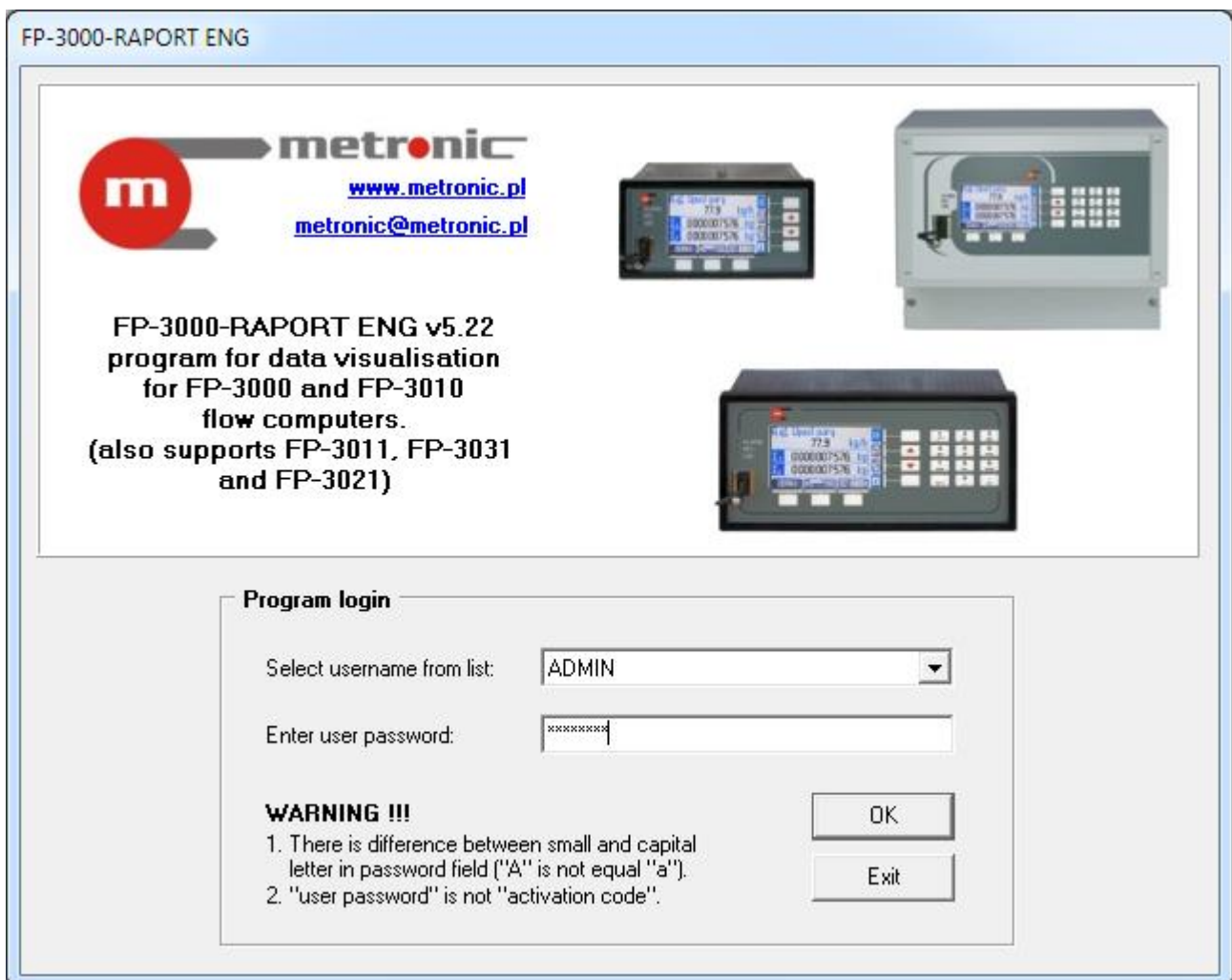


Fig. 2.1 Login window (username: ADMIN, password: metronic)

Login: ADMIN

Password: metronic

3 Program registration

Program in the demo version have all the functionality of the full version, but turn off automatically after approx. 10 min. In addition there is displayed writing "SOFTWARE DEMO VERSION (program needs registration)".

Menu → Program → Program settings...

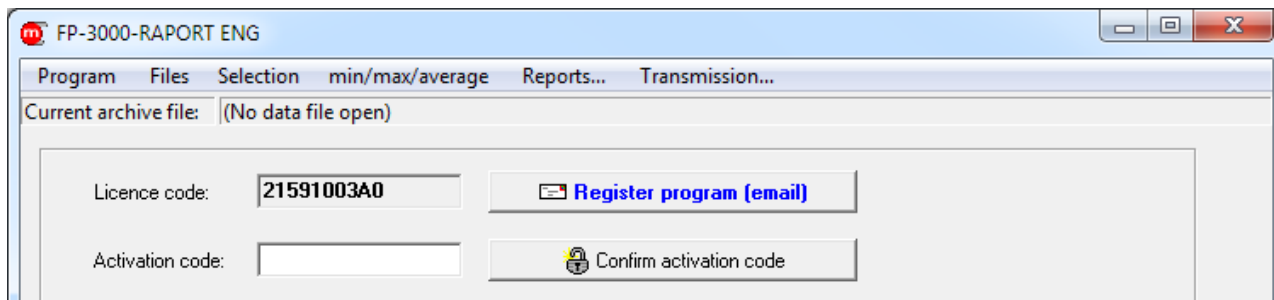


Fig. 3.1 Program registration

4 Adding/delete user, changing the administrator password

Menu → Program → Program settings...

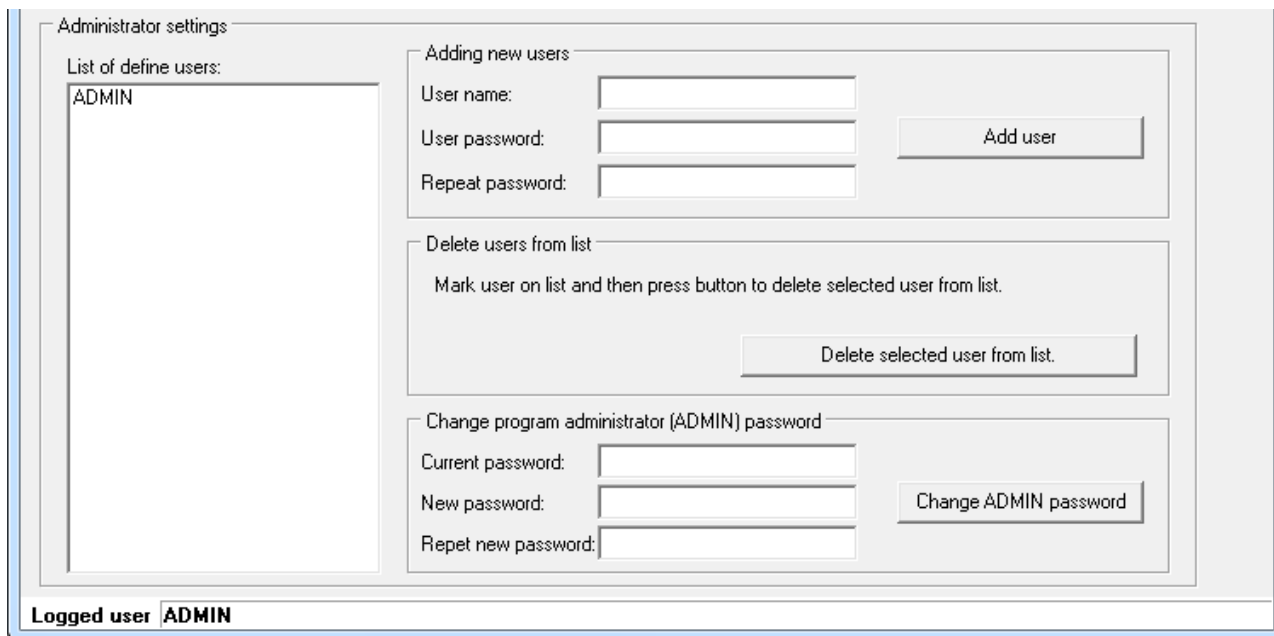


Fig. 4.1 Program settings

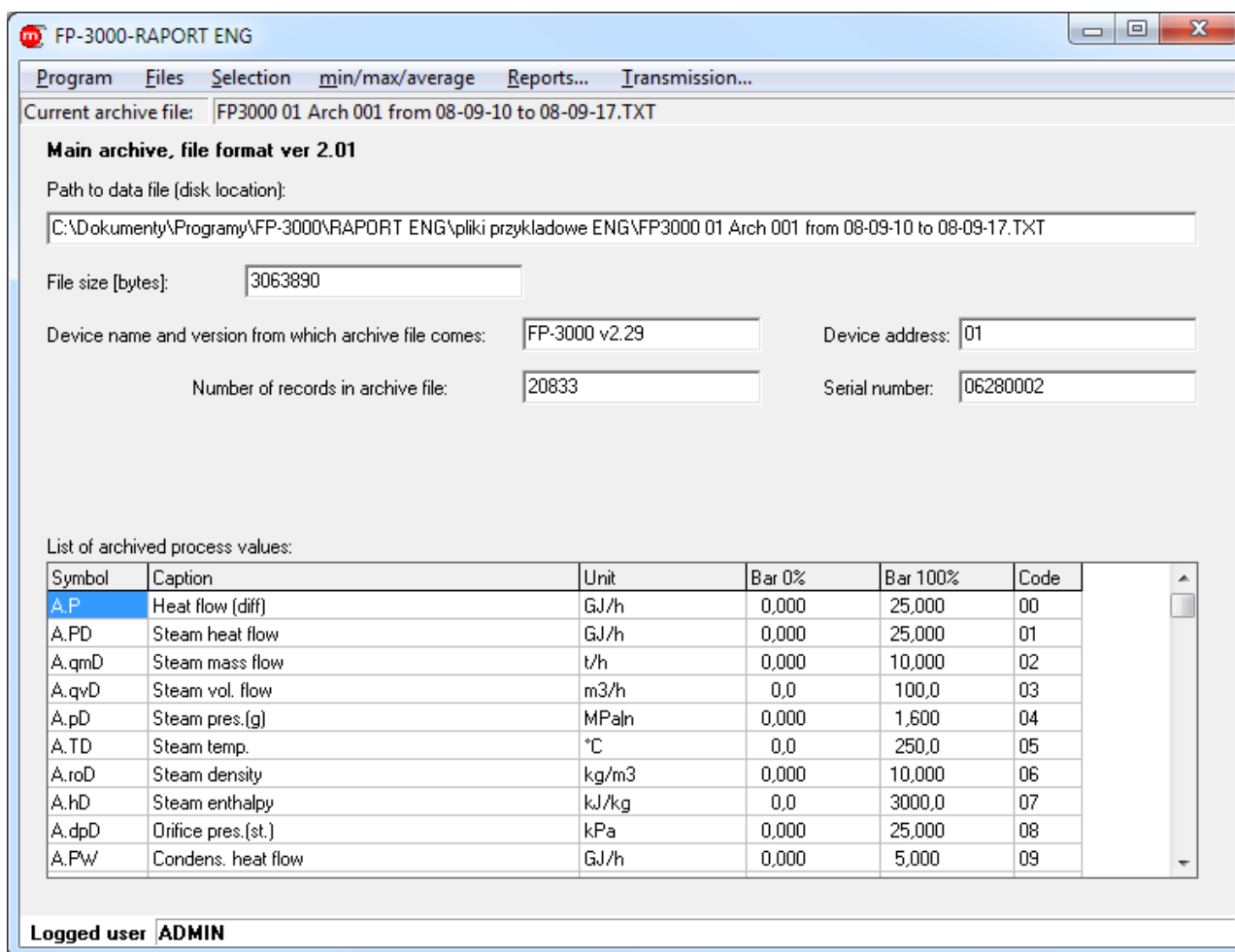
5 Analysis and visualization data from computer hard disc

5.1 Information about file

Menu → Files →

- Open main archive file...
- Open hourly archive file...
- Open event log file...
- Open authorization log file...

Menu → Files → Information about file...



FP-3000-RAPORT ENG

Program Files Selection min/max/average Reports... Transmission...

Current archive file: FP3000 01 Arch 001 from 08-09-10 to 08-09-17.TXT

Main archive, file format ver 2.01

Path to data file (disk location):

File size [bytes]:

Device name and version from which archive file comes: Device address:

Number of records in archive file: Serial number:

List of archived process values:

Symbol	Caption	Unit	Bar 0%	Bar 100%	Code
A.P	Heat flow (diff)	GJ/h	0,000	25,000	00
A.PD	Steam heat flow	GJ/h	0,000	25,000	01
A.qmD	Steam mass flow	t/h	0,000	10,000	02
A.qvD	Steam vol. flow	m ³ /h	0,0	100,0	03
A.pD	Steam pres.[g]	MPaIn	0,000	1,600	04
A.TD	Steam temp.	°C	0,0	250,0	05
A.roD	Steam density	kg/m ³	0,000	10,000	06
A.hD	Steam enthalpy	kJ/kg	0,0	3000,0	07
A.dpD	Orifice pres.(st.)	kPa	0,000	25,000	08
A.Pw	Condens. heat flow	GJ/h	0,000	5,000	09

Logged user **ADMIN**

Fig. 5.1 Window with information about the currently open data file

5.2 Combine data files

Menu → Files → Combine data files...

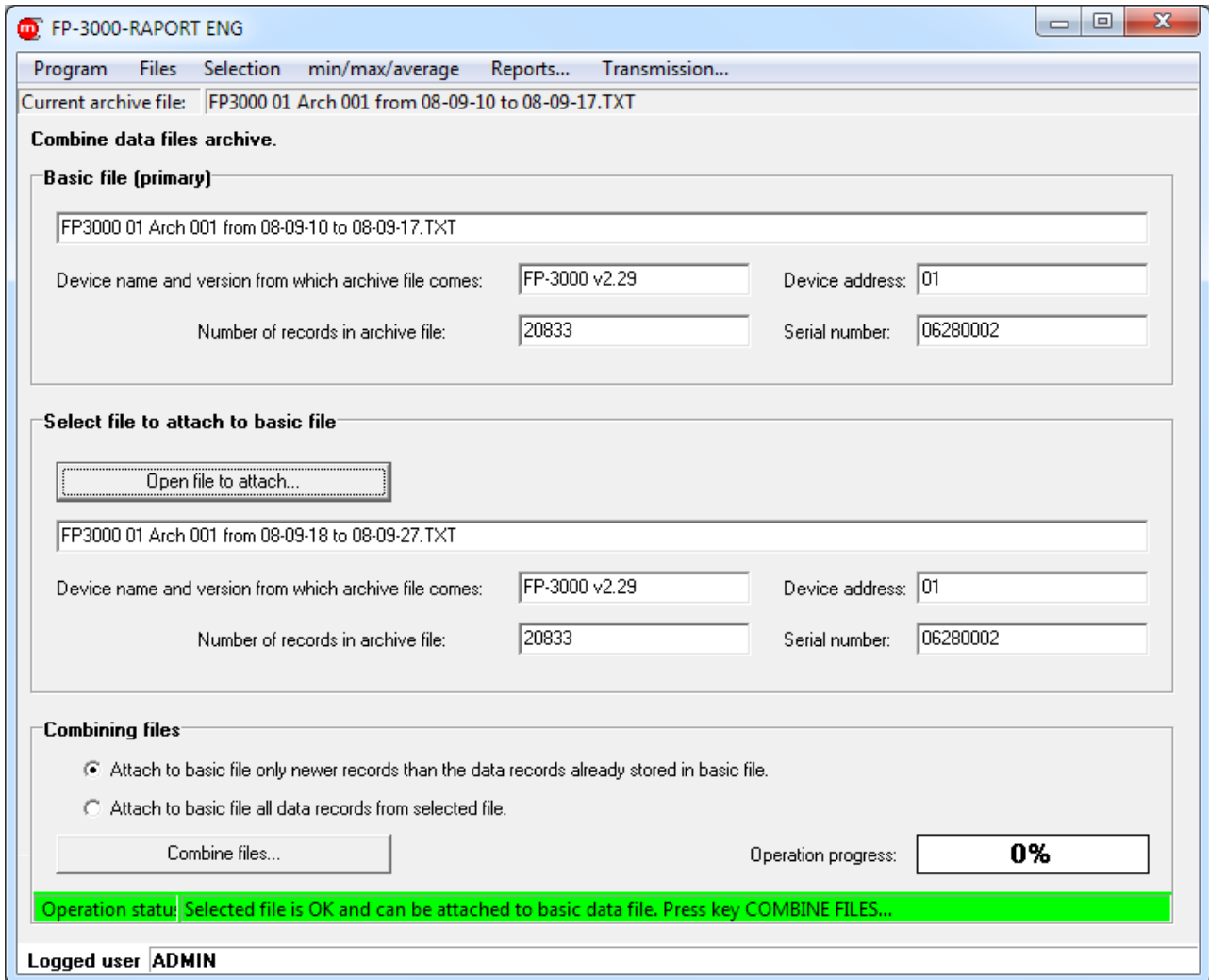


Fig. 5.2 Combine data files

5.3 File control

Menu → Files → Check data in file...

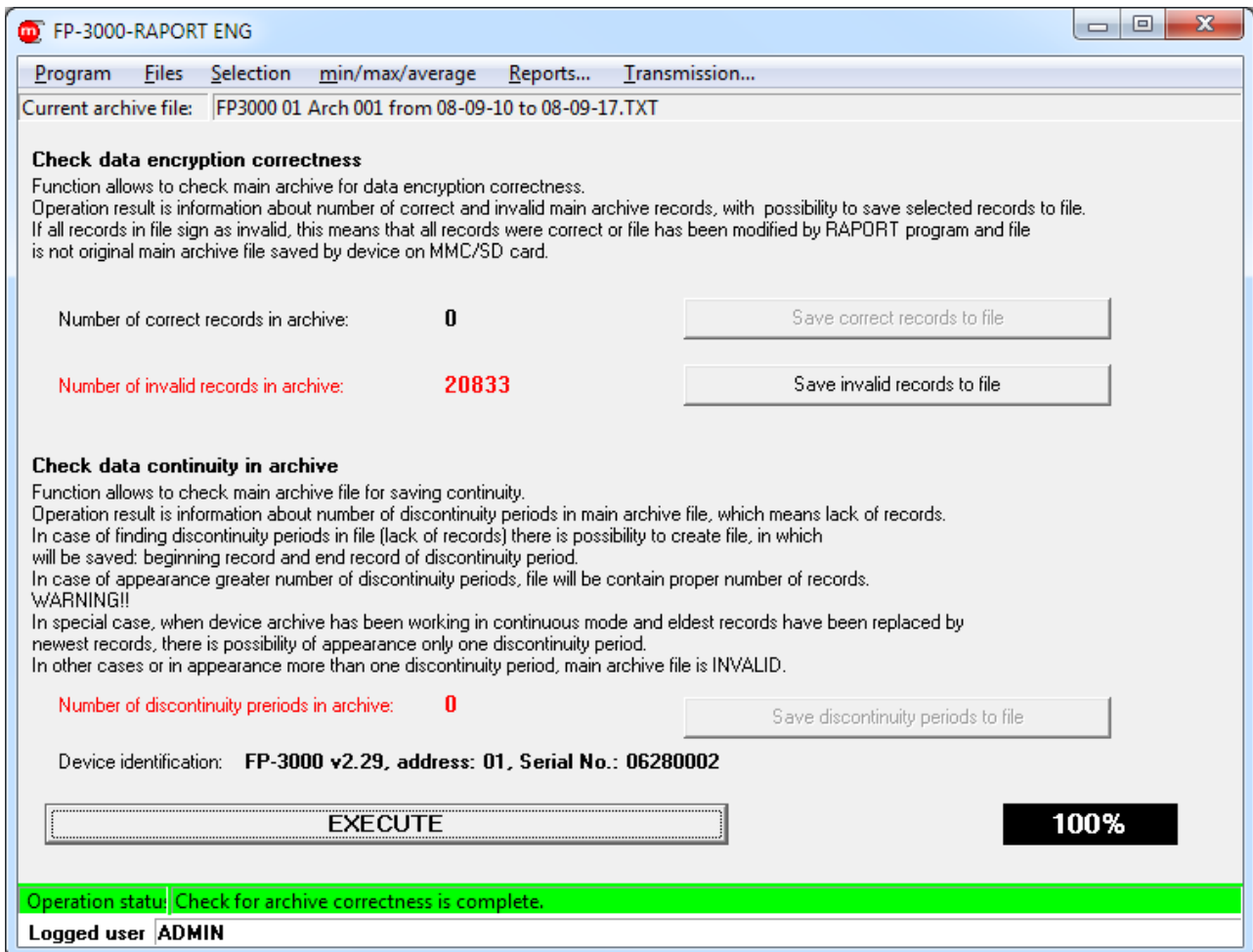


Fig. 5.3 Check data in file window

5.4 Data selection

Menu → Selection

- Find the eldest and the youngest...
- Sort by time...
- Find from date to date...
- Find less then...
- Find from range...
- Find outside range...
- Find greater than...

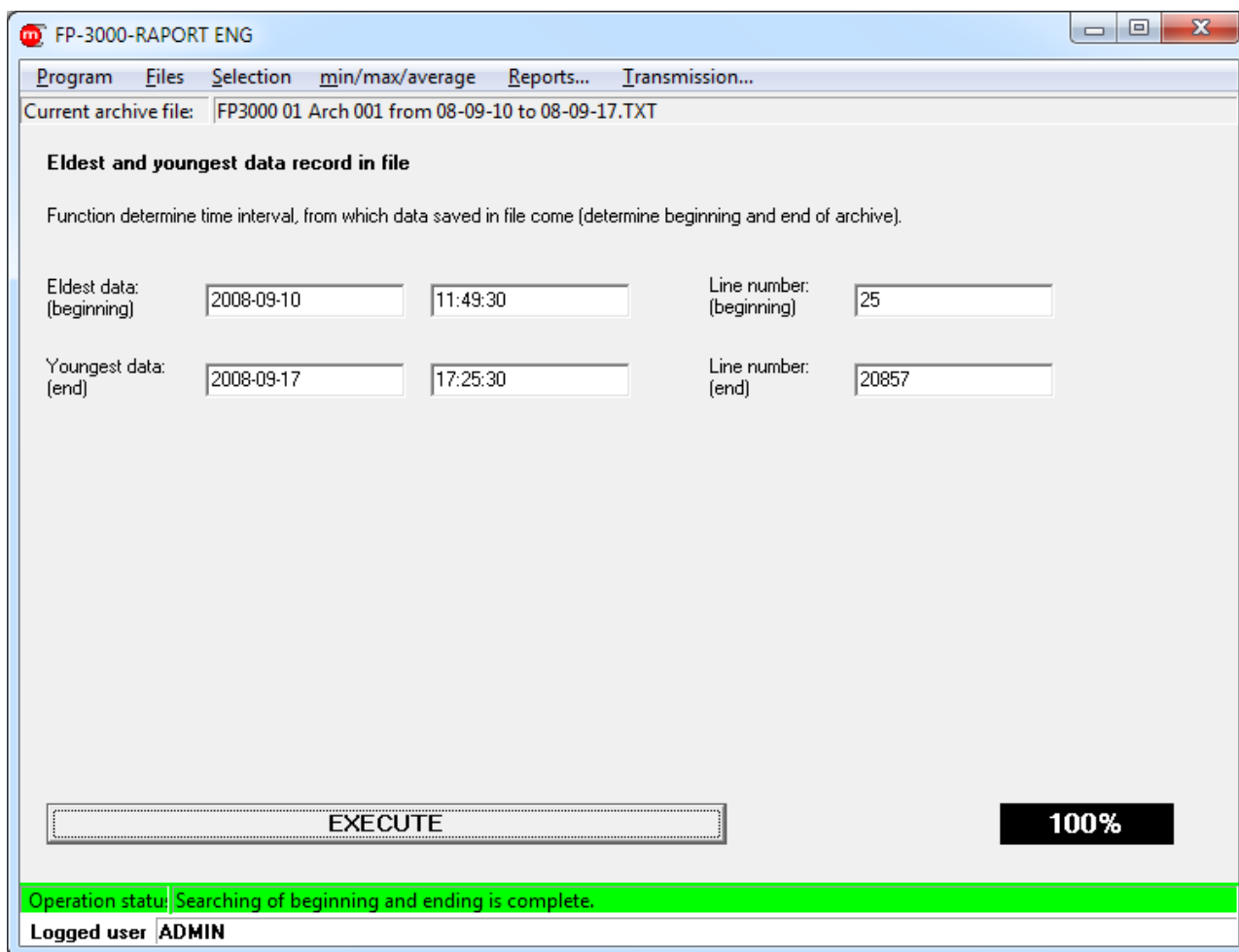


Fig. 5.4 Search the oldest and youngest data record

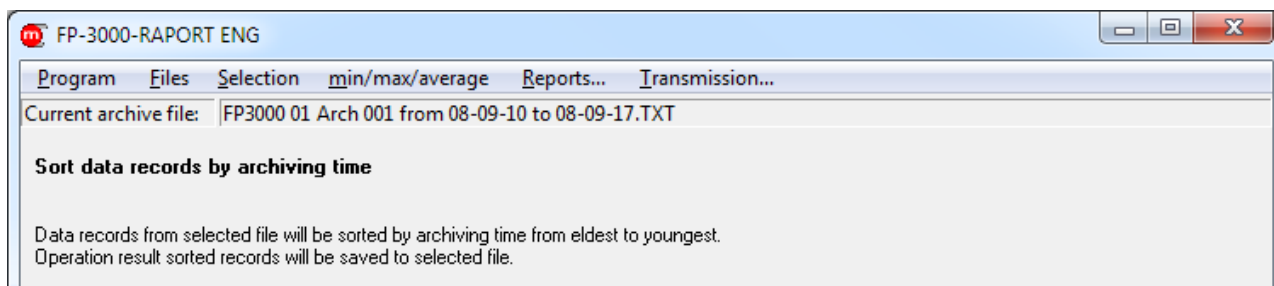


Fig. 5.5 Saving sorted by time archive into new file

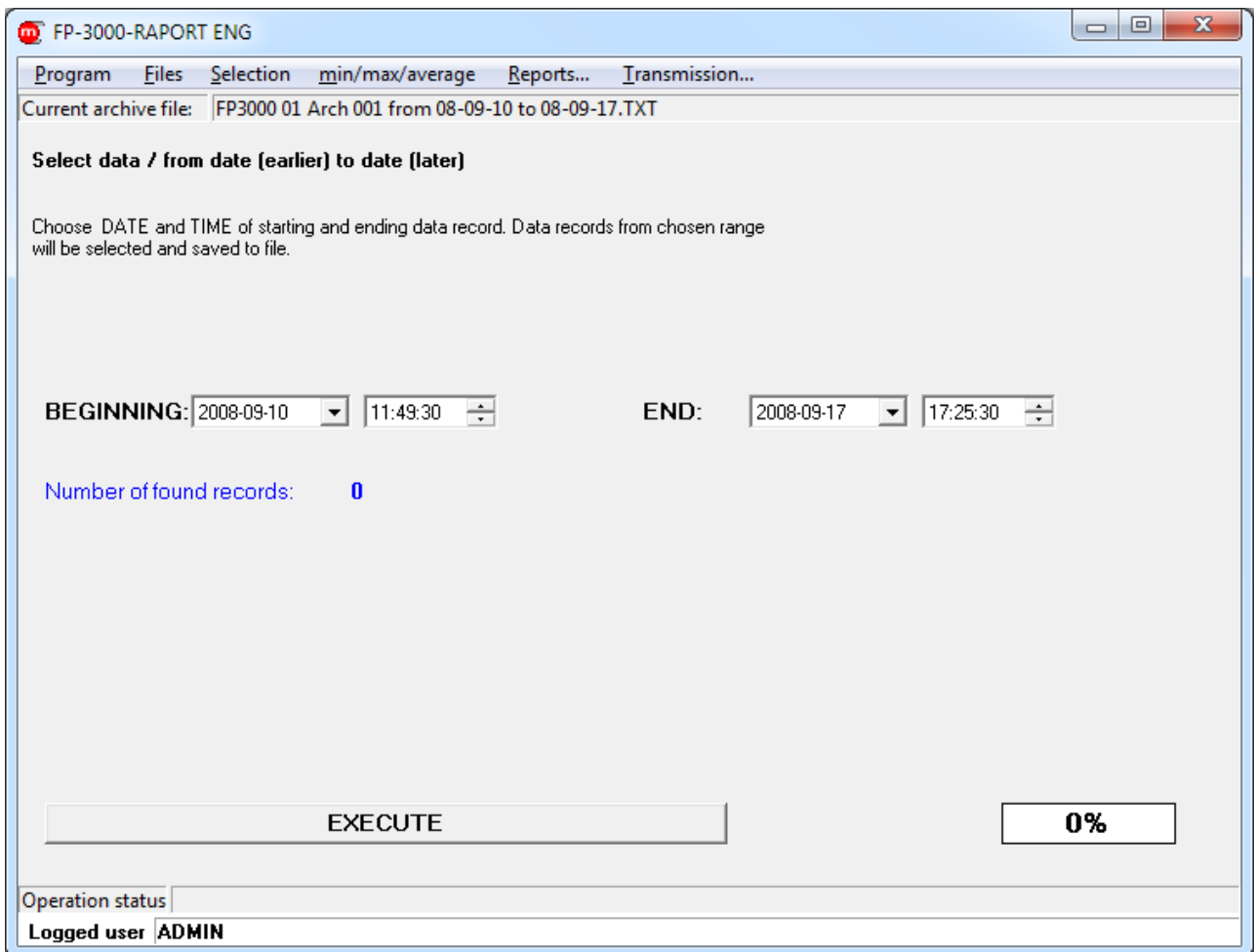


Fig. 5.6 Saving selected time into new file

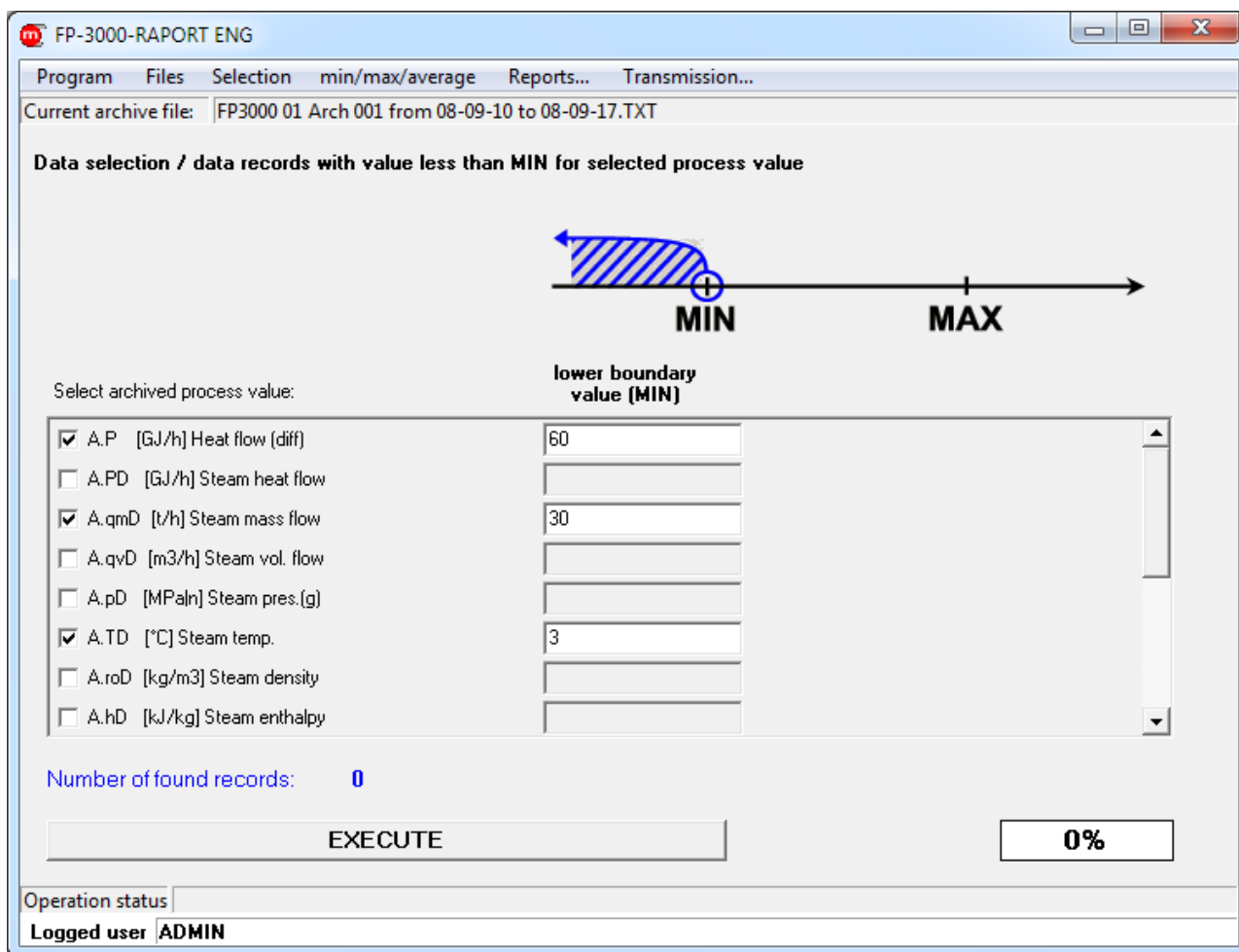


Fig. 5.7 Saving values less than specified boundary values into new file

5.5 Determination of extremes

Menu → min/max/average

- Minutely minimums...
- Hourly minimums...
- Daily minimums...
- Monthly minimums...
- Minutely maximums...
- Hourly maximums...
- Daily maximums...
- Monthly maximums...
- Minutely averages...
- Hourly averages...
- Daily averages...
- Monthly averages...

FP-3000-RAPORT ENG

Program Files Selection min/max/average Reports... Transmission...

Current archive file: FP3000 01 Arch 001 from 08-09-10 to 08-09-17.TXT

Minimum value / minimal data value in hourly range

WARNING!

- 1) File with data should be sorted by time (menu: selection, function: sort by time).
- 2) New data records including data with minimum values from selected period are saved with date and time beginning of selected period.

Number of found records: 0

EXECUTE 0%

Operation status

Logged user ADMIN

Fig. 5.8 Saving records with minimum values from consecutive hourly periods into new file

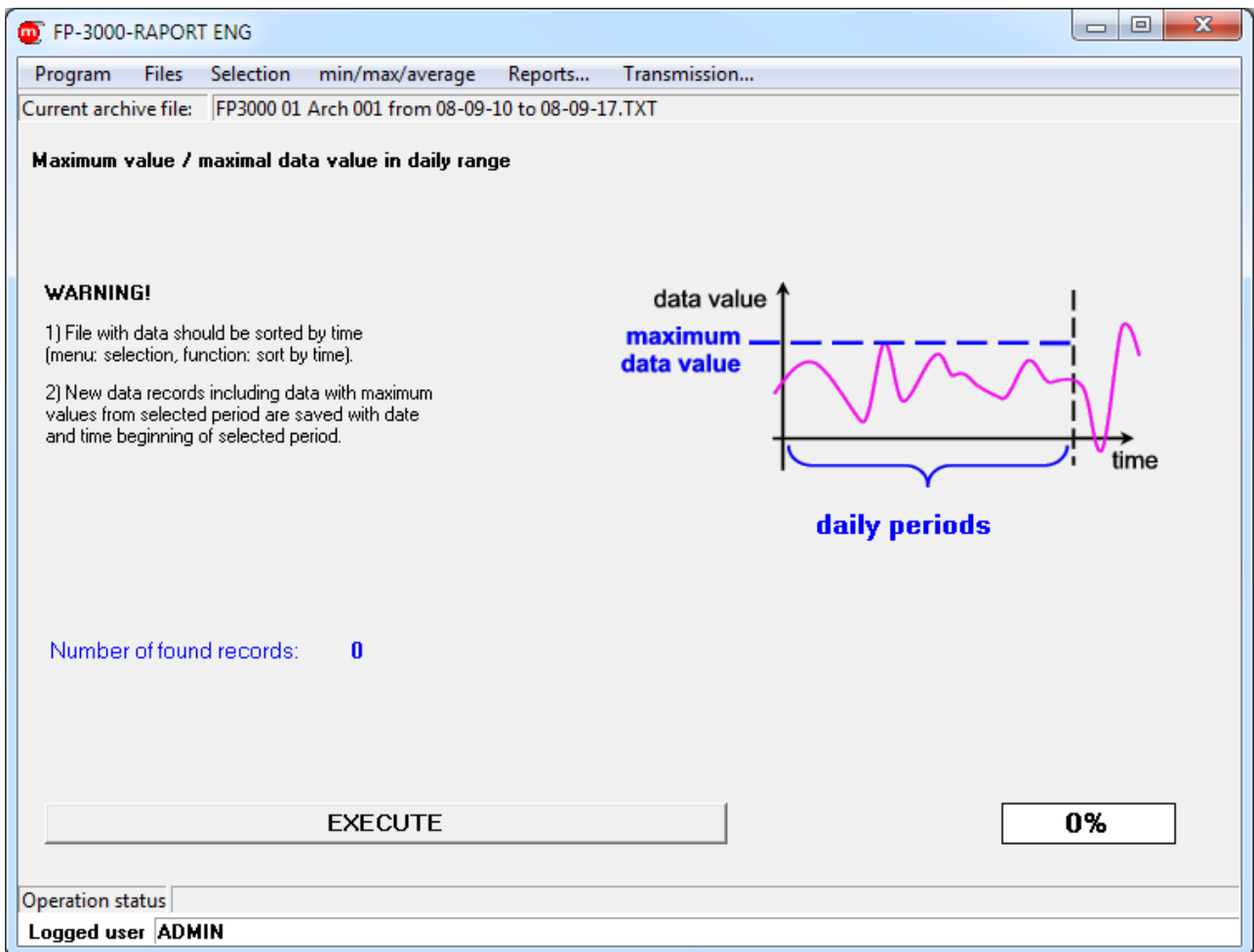


Fig. 5.9 Saving records with maximum values from consecutive daily periods into new file

FP-3000-RAPORT ENG

Program Files Selection min/max/average Reports... Transmission...

Current archive file: FP3000 01 Arch 001 from 08-09-10 to 08-09-17.TXT

Averaging data / averages from monthly periods

WARNING!!

- 1) File with data should be sorted by time (menu: selection, function: sort by time).
- 2) New data records including data with counted average values for every process value are saved with date and time of first record in selected period.

Number of found records: 0

EXECUTE 0%

Operation status

Logged user ADMIN

Fig. 5.10 Saving records with average values from consecutive monthly periods into new file

5.6 Preparation of reports: graphs

Menu → Reports...

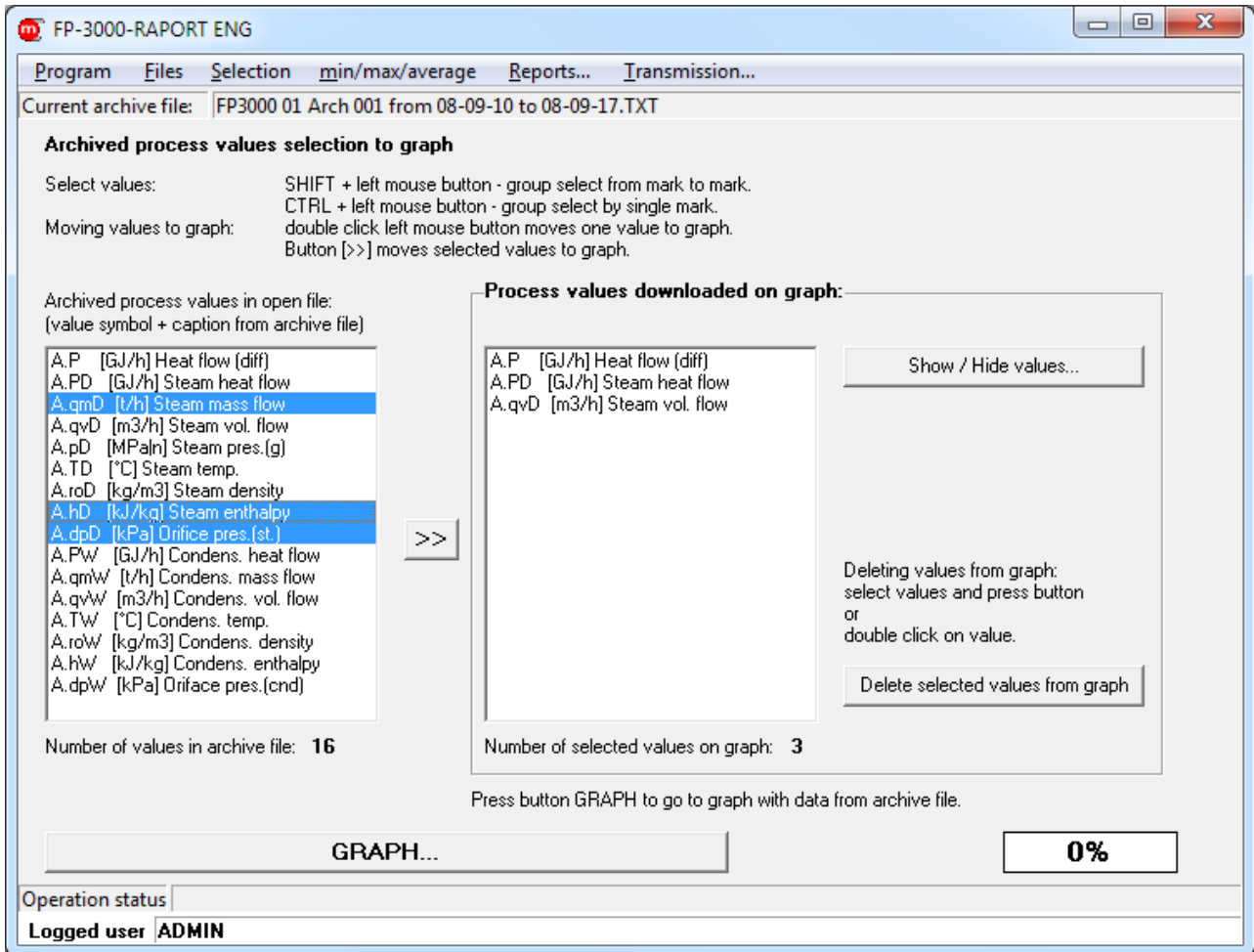


Fig. 5.11 Selection of channel to present on the graph

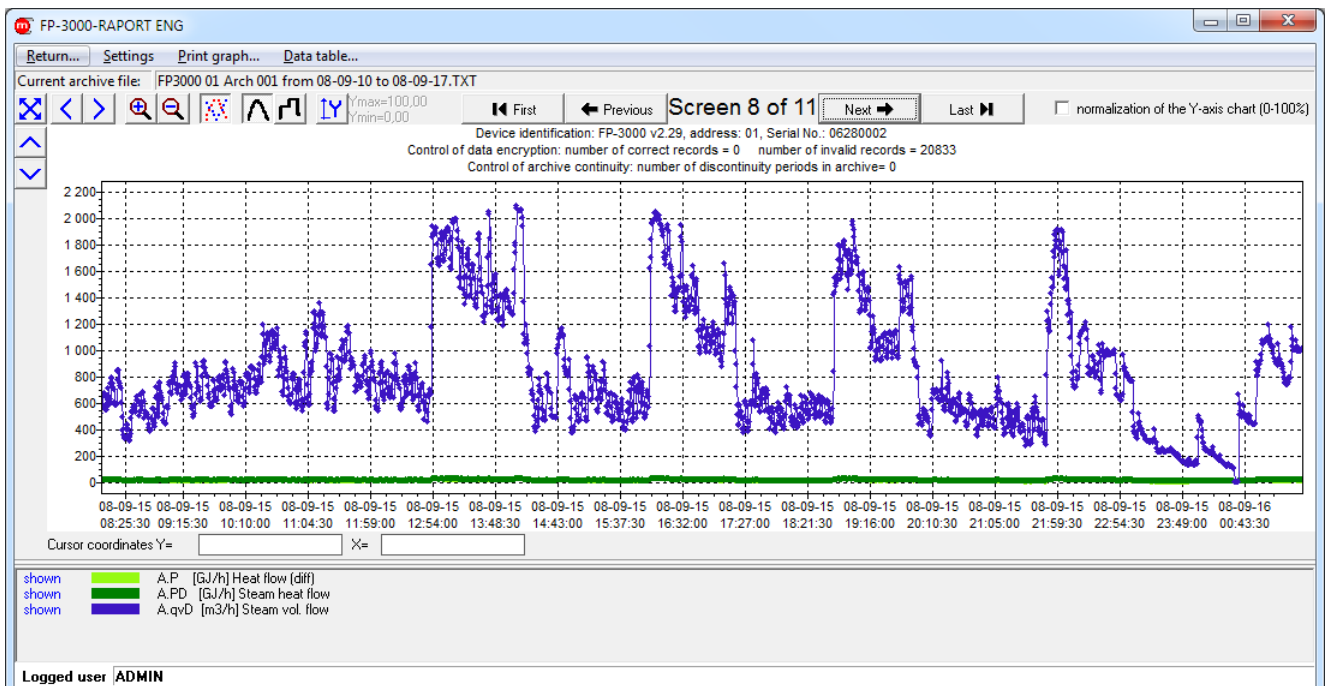


Fig. 5.12 Graph window

- Menu → Settings → Show / Hide values...
- Right-click in the graph area → Show / Hide values

- Okno Fig. 5.11 

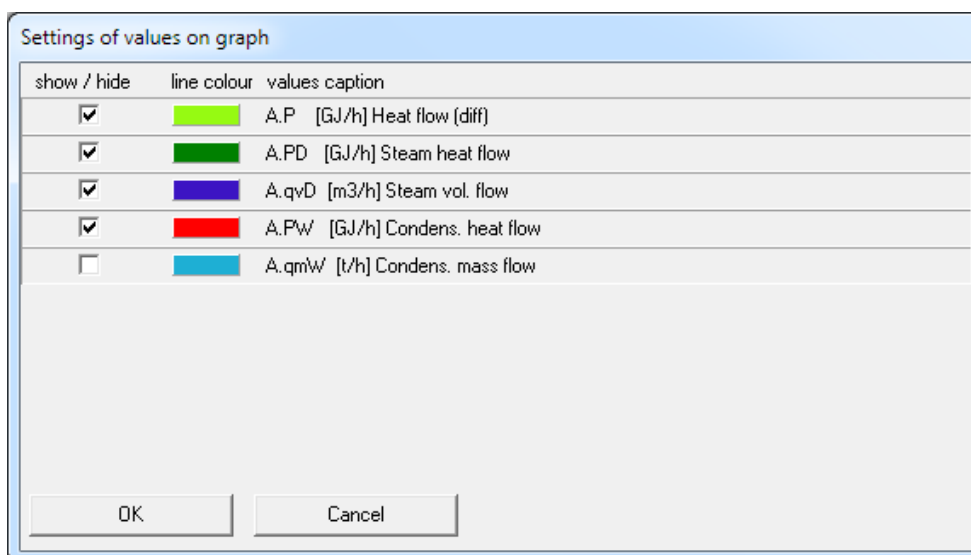


Fig. 5.13 Settings of values on graph

- Menu → Settings → Graph settings...
- Right-click in the graph area → Graph settings...

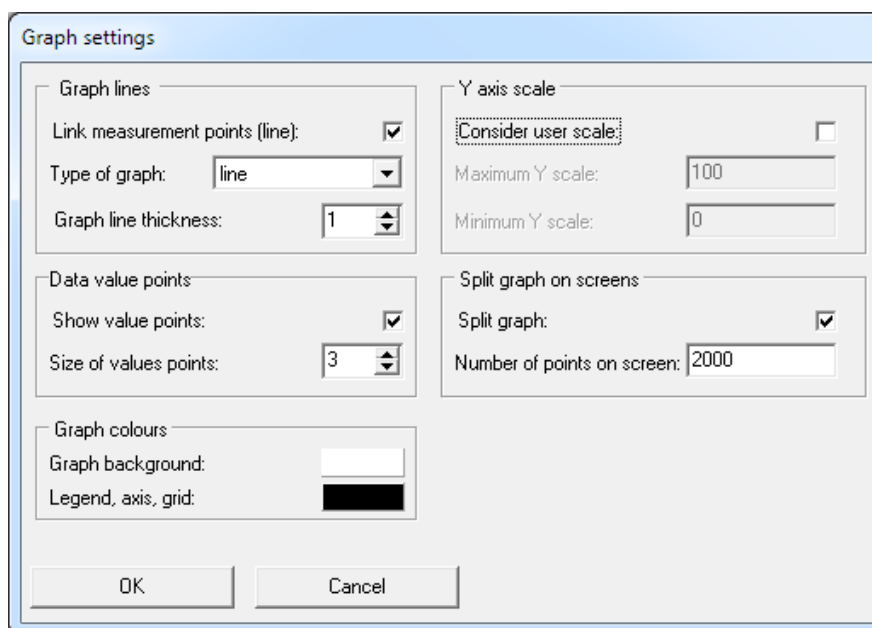


Fig. 5.14 Graph settings

Window Fig. 5.12 Menu → Print graph...

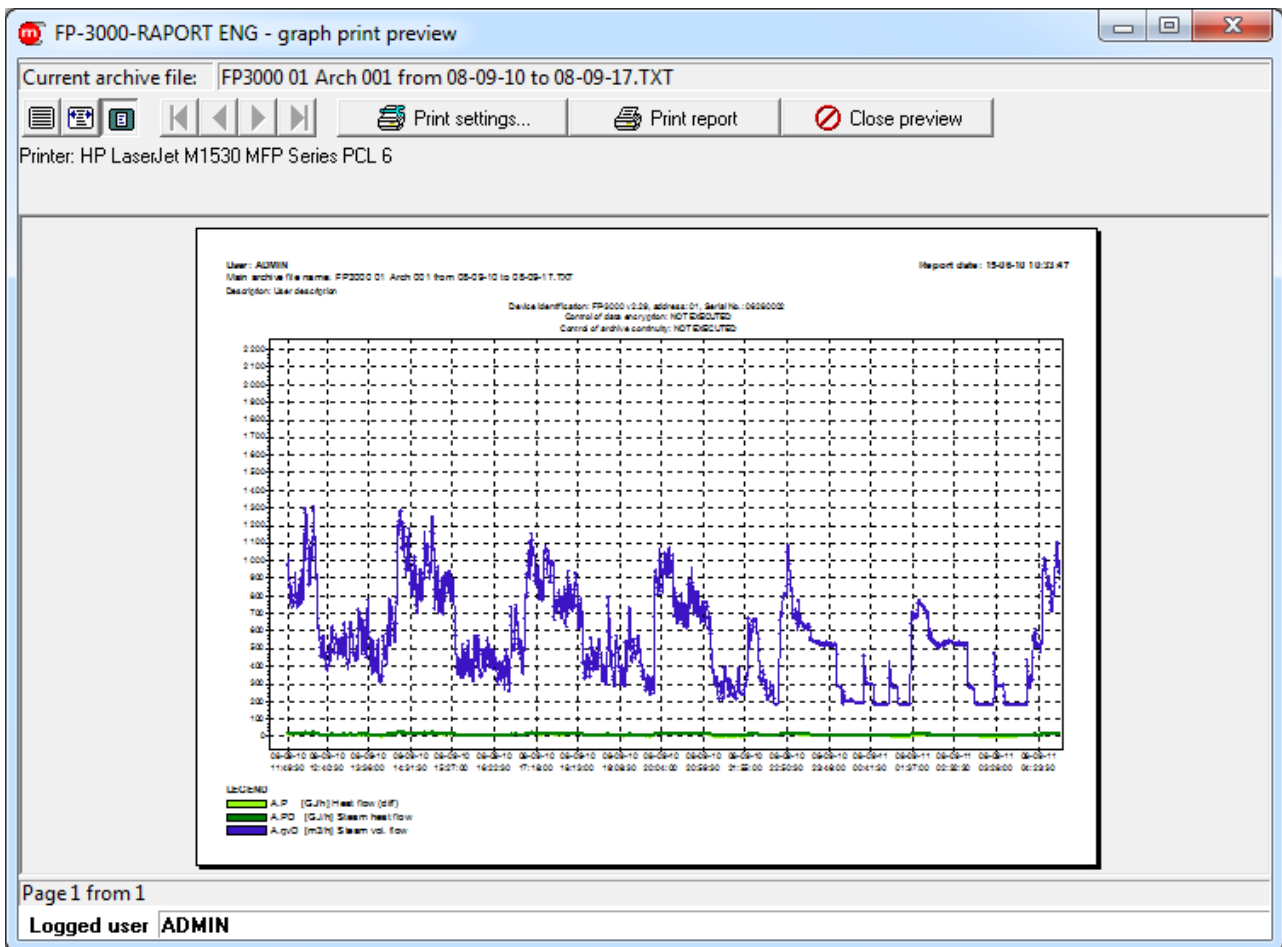


Fig. 5.15 Graph print preview

5.7 Preparation of reports: tables

Window Fig. 5.12: Menu → Data table ...

FP-3000-RAPORT ENG

Return... Print table...

Current archive file: FP3000 01 Arch 001 from 08-09-10 to 08-09-17.TXT

LEGEND - status (record)

- H - history archive record
- D - current data
- F - data from FIFO memory
- S - hourly archive record

LEGEND - data value status

- 83a5 emergency result equivalent to value 83.5
- ||-- current below 3,6mA
- E-- current above 22mA
- S-- steam parameters below saturation curve
- W-- (-----) input not ready
- F-- (---A--) RTD or TC failure
- R-- (---Z--) exceeding the range
- C-- (---P--) internal communication error

Data value from 08-09-10 11:49:30 to 08-09-11 04:29:00

Date time	Stat	A.P [GJ/h]	A.PD [GJ/h]	A.qvD [m3/h]
08-09-10 16:46:00	H	11,684	11,684	551,4
08-09-10 16:46:30	H	11,024	11,024	519,2
08-09-10 16:47:00	H	10,714	10,714	504,6
08-09-10 16:47:30	H	10,600	10,600	497,7
08-09-10 16:48:00	H	11,023	11,023	520,1
08-09-10 16:48:30	H	10,612	10,612	499,0
08-09-10 16:49:00	H	10,485	10,485	491,6
08-09-10 16:49:30	H	12,533	12,533	597,0
08-09-10 16:50:00	H	13,865	13,865	665,1
08-09-10 16:50:30	H	14,880	14,880	720,9
08-09-10 16:51:00	H	15,334	15,334	747,5
08-09-10 16:51:30	H	14,197	14,197	684,9
08-09-10 16:52:00	H	13,963	13,963	673,3
08-09-10 16:52:30	H	13,594	13,594	653,0
08-09-10 16:53:00	H	13,484	13,484	647,3
08-09-10 16:53:30	H	13,192	13,192	631,7

Logged user ADMIN

Fig. 5.16 Data table window

Window Fig. 5.16 Menu → Print table...

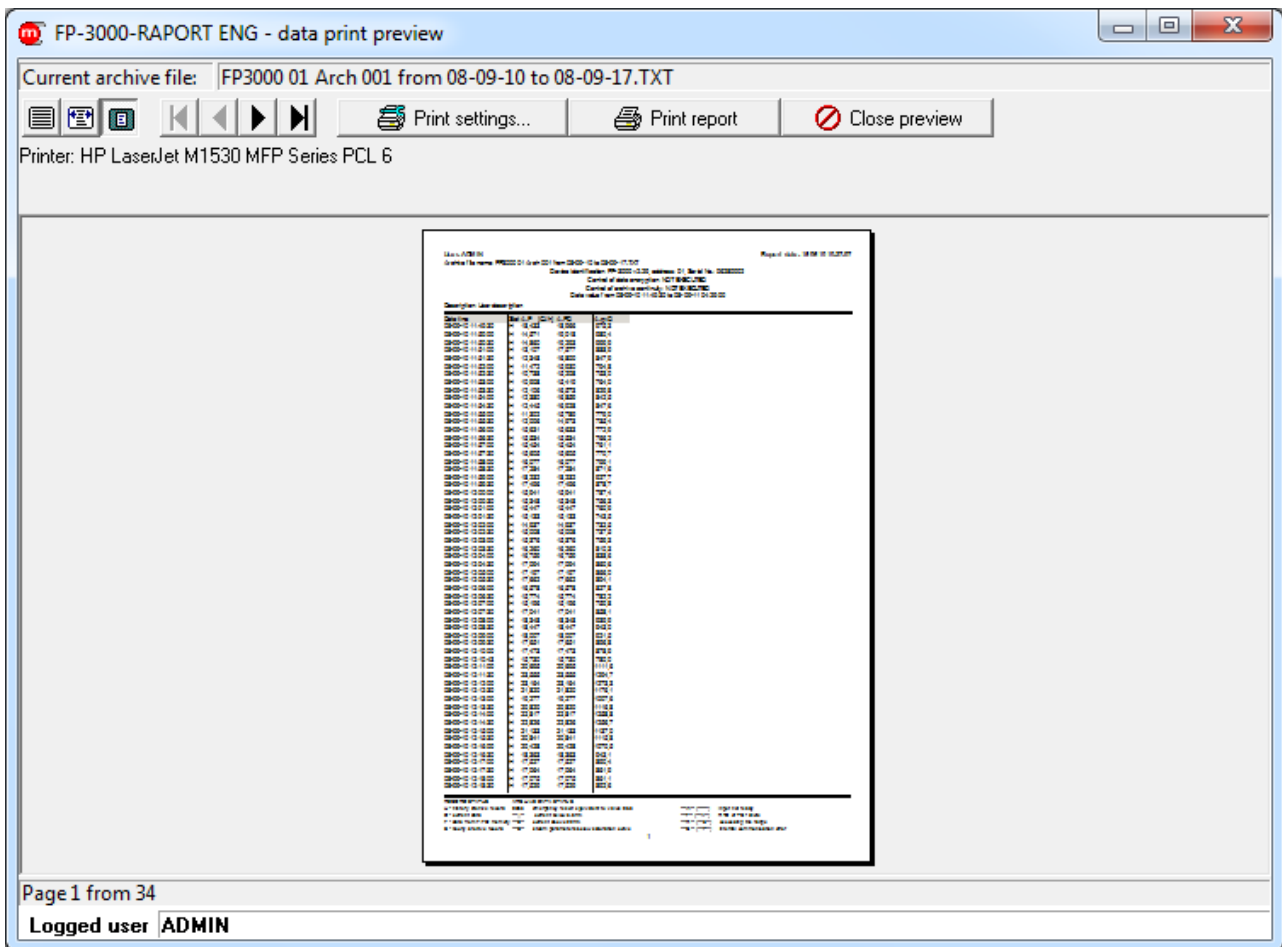


Fig. 5.17 Print data table preview

6 Remote reading of measurement data

Menu → Transmission...

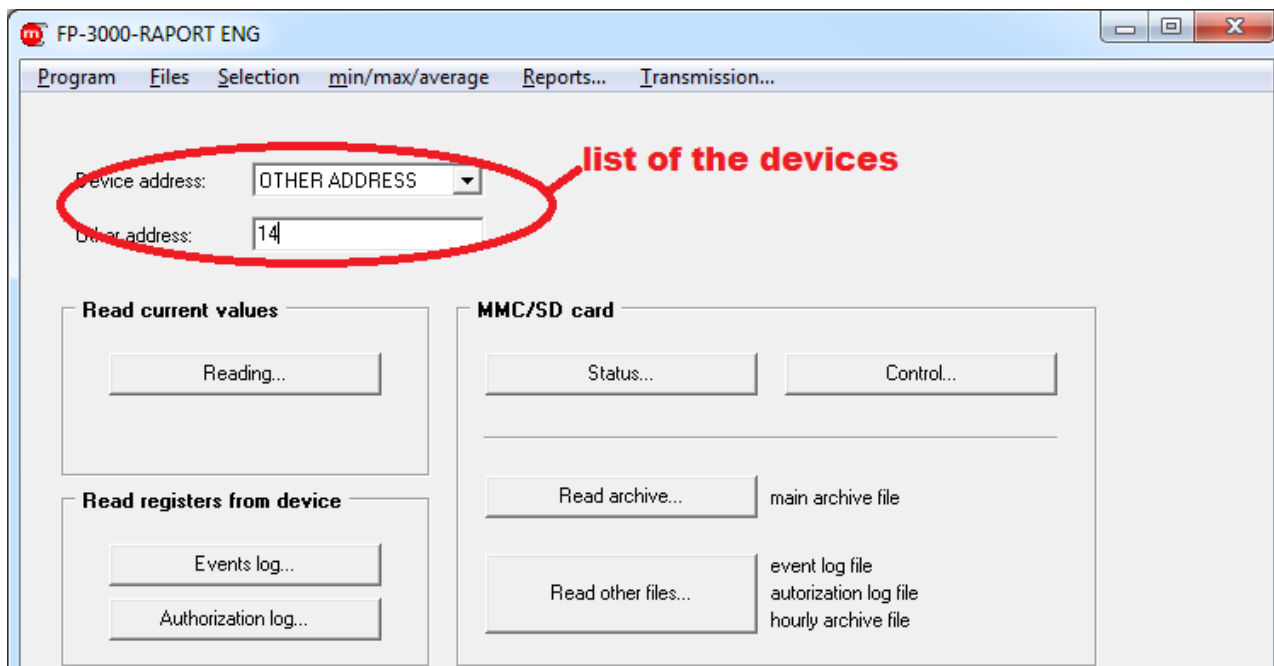


Fig. 6.1 "Transmission..." window

For each device from the list program separately saves settings of transmission, graphs etc.

6.1 Transmission settings

Windows Fig. 6.5 ... Fig. 6.13: Menu → Transmission settings...

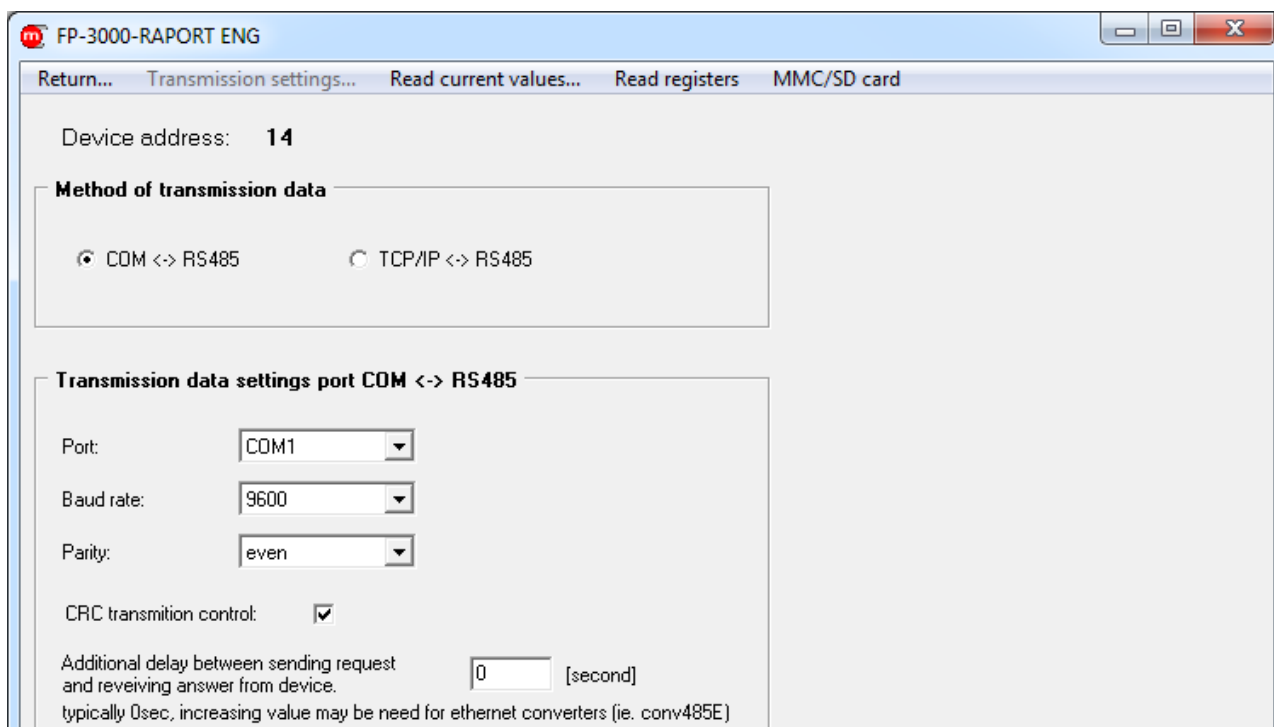
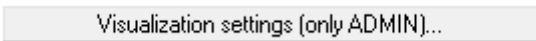


Fig. 6.2 RS485 transmission settings, ASCII protocol



Fig. 6.3 RS485 with RS485 / Ethernet converter transmission settings, ASCII protocol

6.2 Visualisation settings

Windows Fig. 6.7 button  (available only for admin; function requires initial reading data from the device).

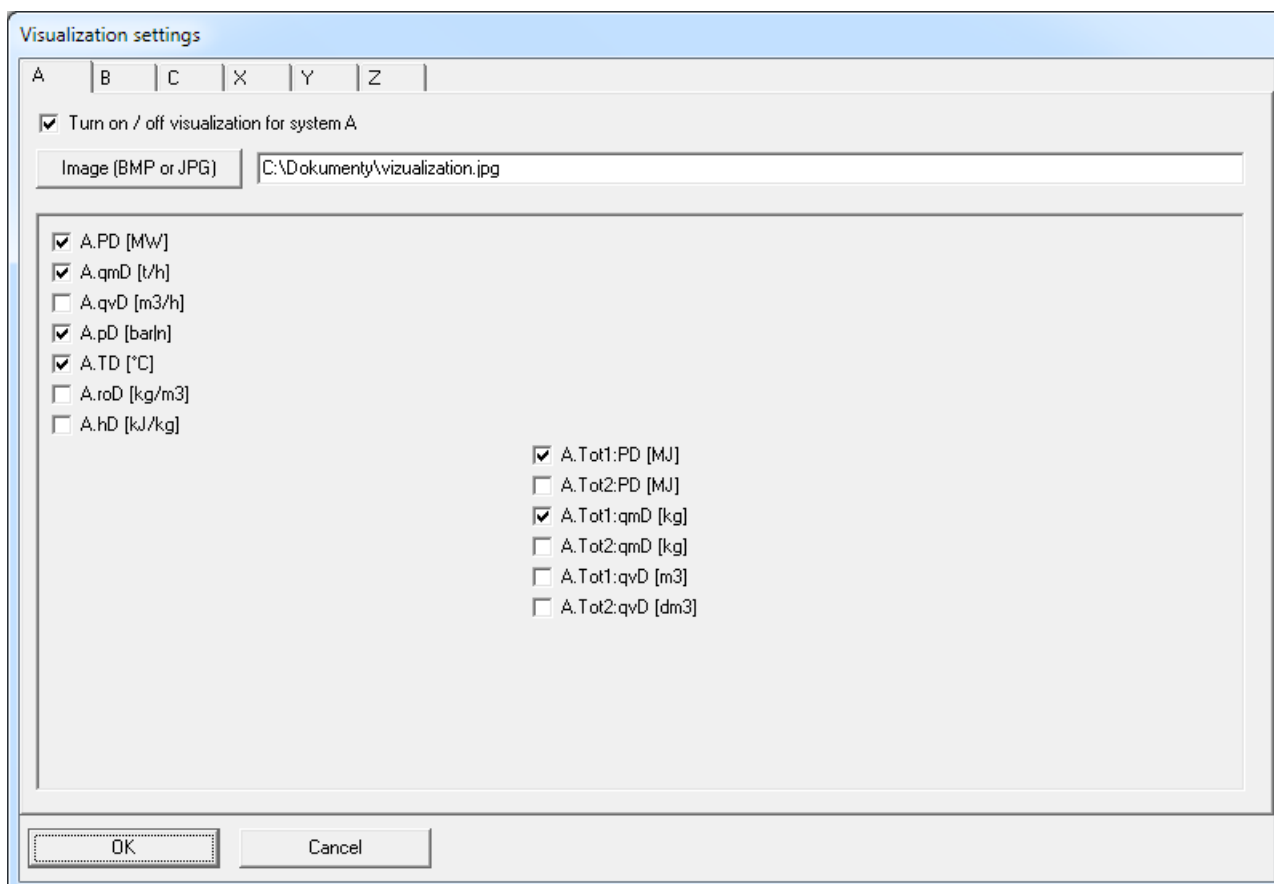


Fig. 6.4 Selection of graphic used in visualization

6.3 Odczyt wyników bieżących

- Window Fig. 6.1 button
- Windows Fig. 6.8...Fig. 6.13: Read current values...

FP-3000-RAPORT ENG

Read data from device, transmission period: [seconds] **START** **STOP**

Reading counter: 3

Name, version, device address: Date: Time:

Data status:

A.PD	6,1	MW	Tot.1	00000164251	MJ	Tot.2	00000001542	MJ					
A.qmD	7,24	t/h	Tot.1	00010460523	kq	Tot.2	00000000512	kq					
A.qvD	2504,2	m3/h	Tot.1	00000021198	m3	Tot.2	00000177144	dm3					
A.pD	6,18	bar/h											
A.TD	277,8	°C											
A.roD	2,9	kq/m3											
A.hD	3012,1	kJ/kq											

Operation statu: **Data have been read from device (periodical reading).**

Logged user **ADMIN**

Fig. 6.5 Reading current value – table

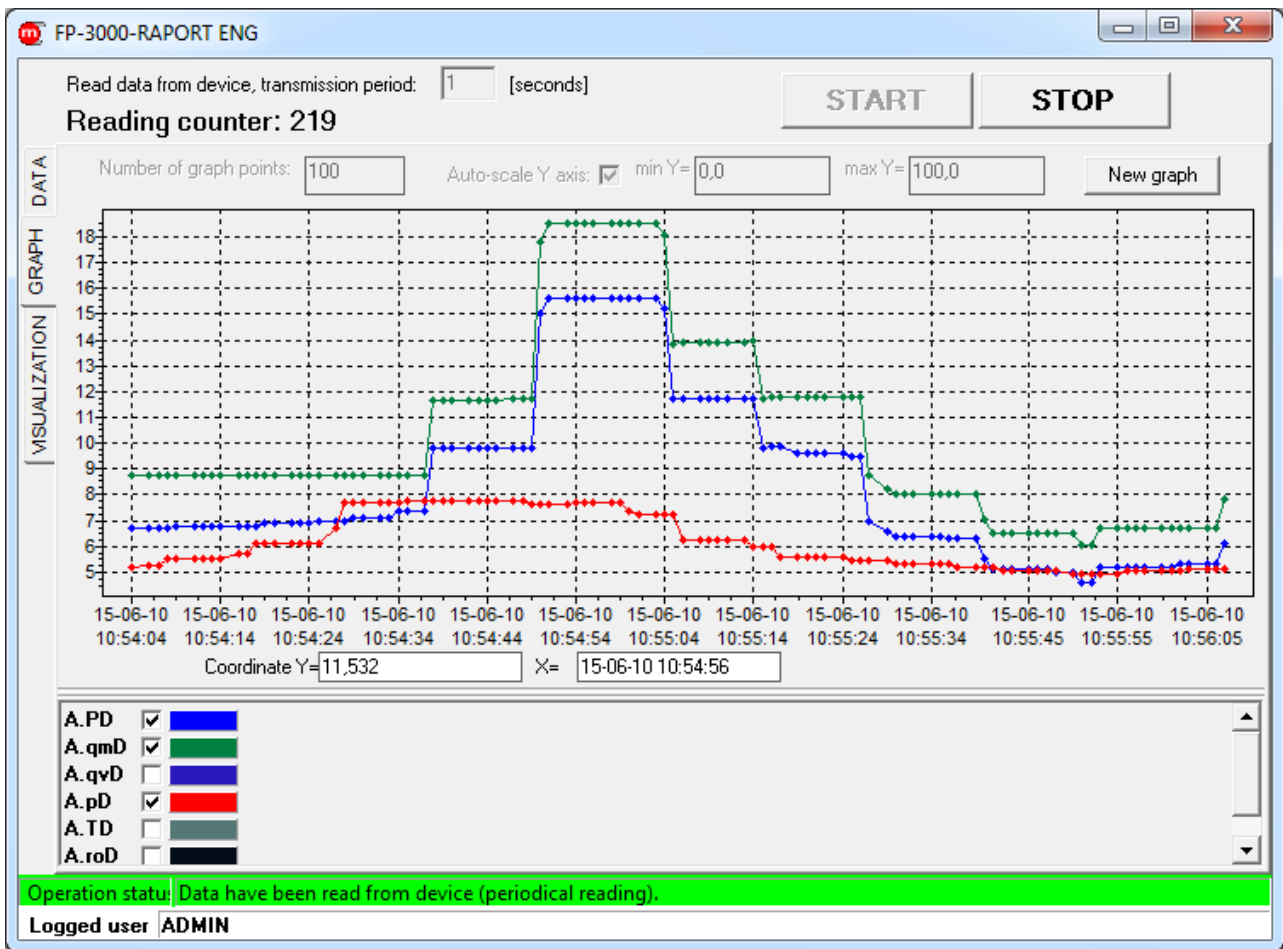


Fig. 6.6 Reading current value – graph

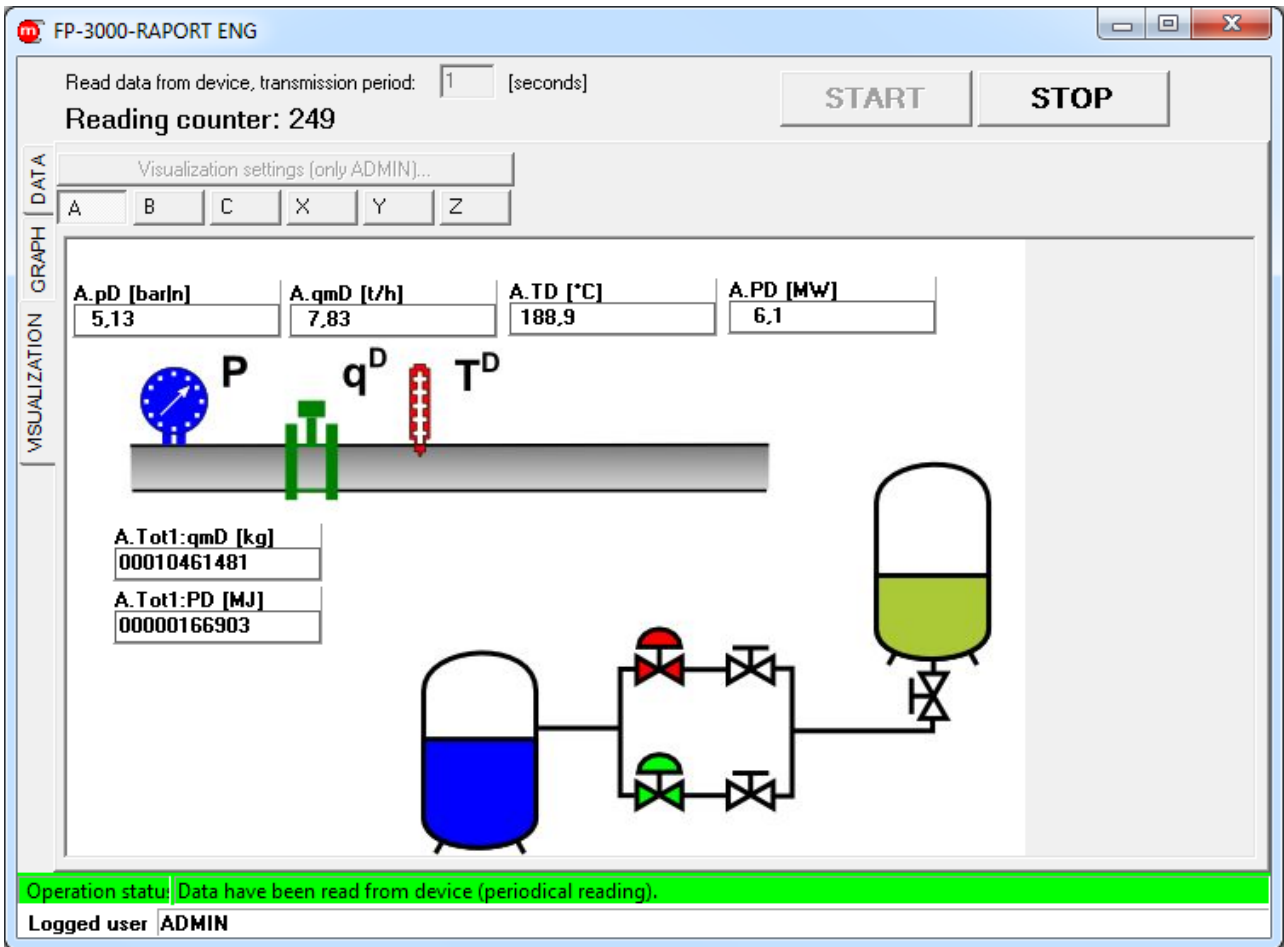


Fig. 6.7 Reading current values – visualization

6.4 Reading from device registers

- Window Fig. 6.1 button
- Windows Fig. 6.5 ... Fig. 6.7 and Fig. 6.9...Fig. 6.13: Menu → Read registers → Events log...

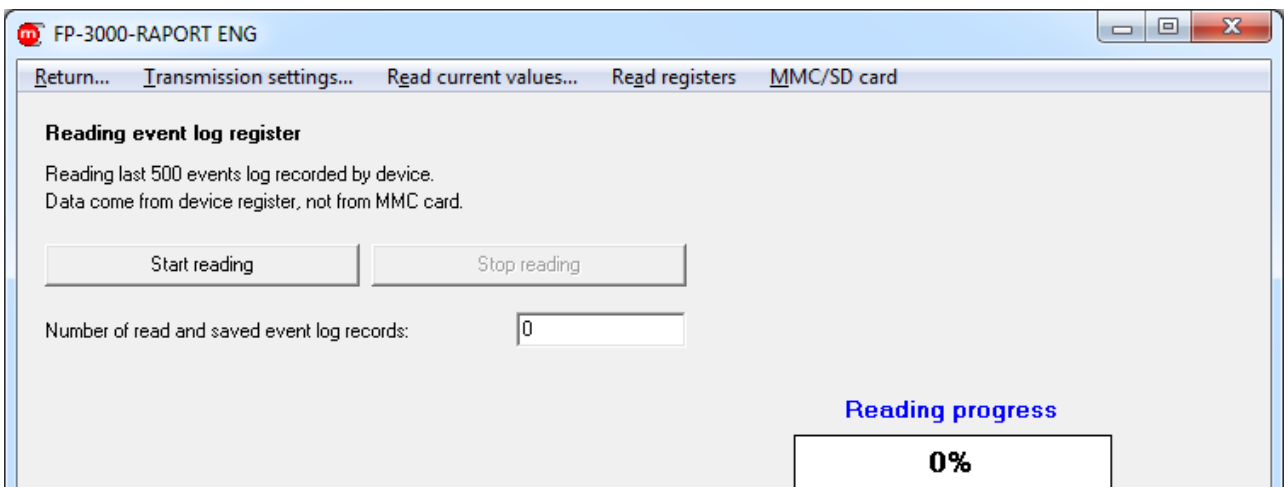


Fig. 6.8 Saving last 500 events logs recorded by device into file

- Window Fig. 6.1 button
- Windows Fig. 6.5 ... Fig. 6.8 and Fig. 6.10...Fig. 6.13: Menu → Read registers → Authorization log...

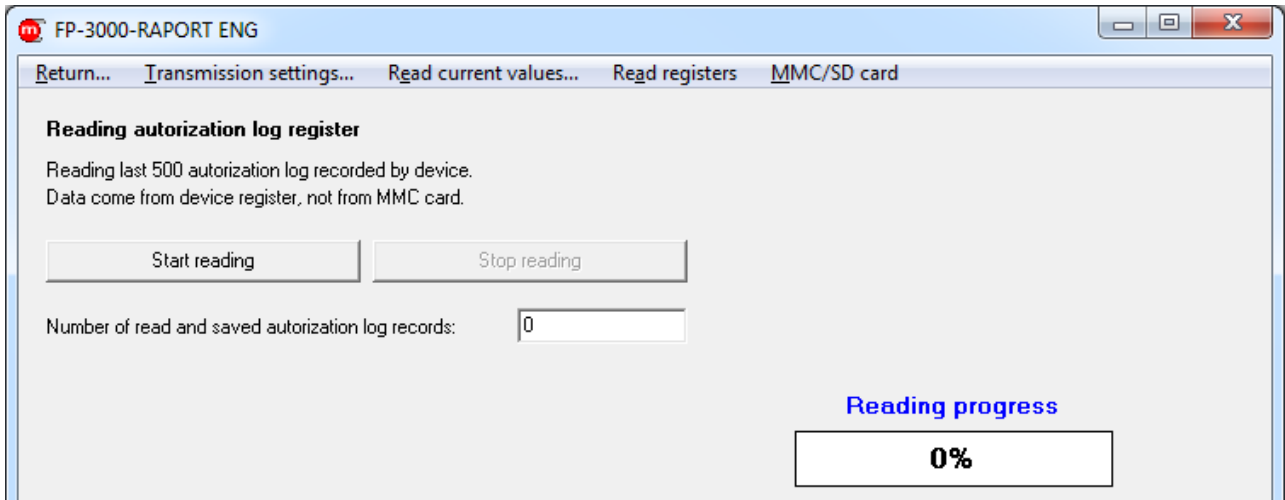


Fig. 6.9 Saving last 500 authorization logs recorded by device into file

6.5 Reading data from MMC/SD card / internal memory

- Window Fig. 6.1 button
- Windows Fig. 6.5... Fig. 6.9 and Fig. 6.11...Fig. 6.13: Menu → MMC/SD card → Status...

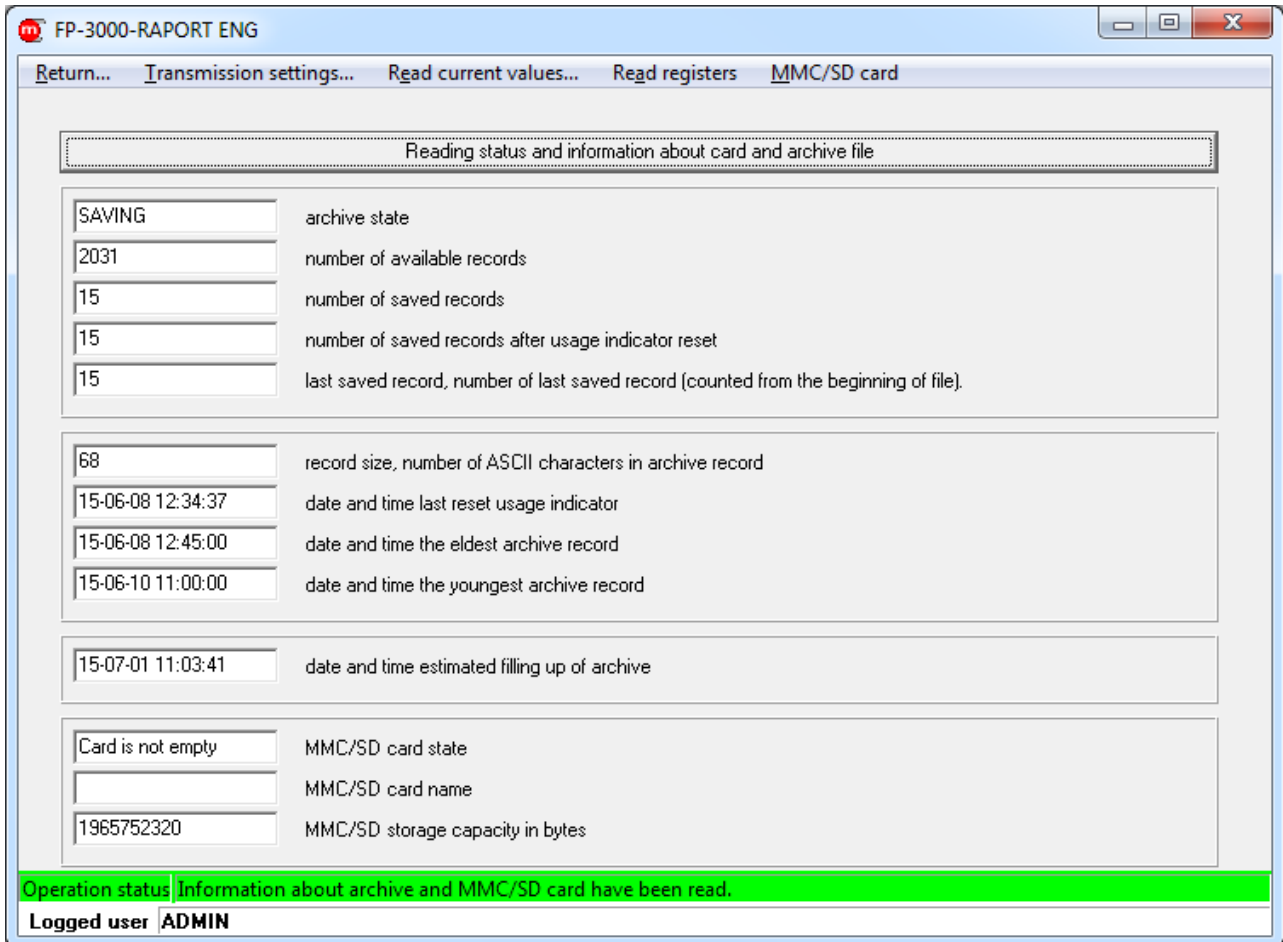


Fig. 6.10 Reading status and information about memory and archive file

- Window Fig. 6.1 button
- Windows Fig. 6.5 ... Fig. 6.10 and Fig. 6.12... Fig. 6.13: Menu → MMC/SD card → Read archive...

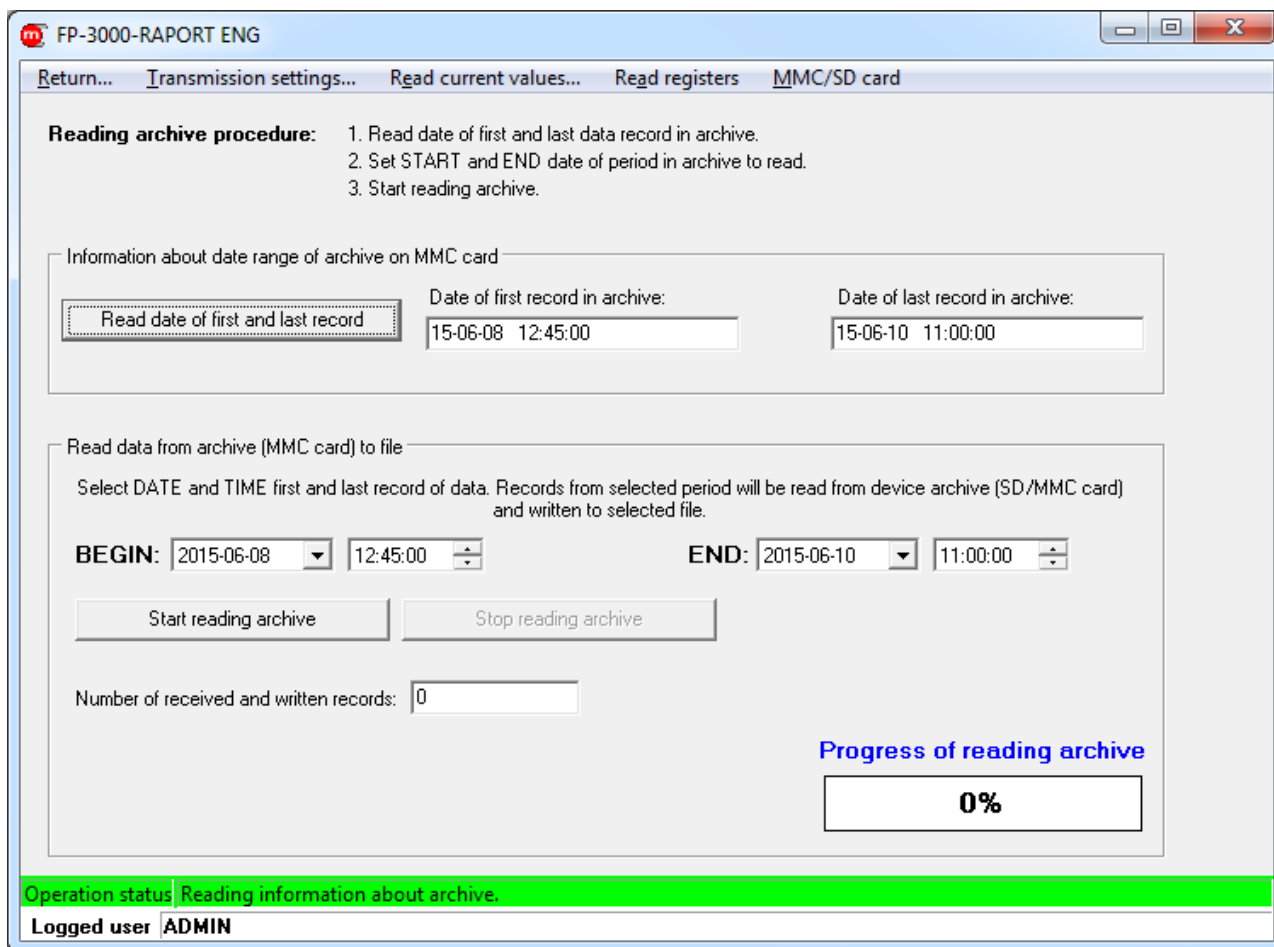


Fig. 6.11 Reading data from Main archive

Read other files...

- Window Fig. 6.1 button
- Windows Fig. 6.5 ... Fig. 6.11 and Fig. 6.13: Menu → MMC/SD card → Read other files...

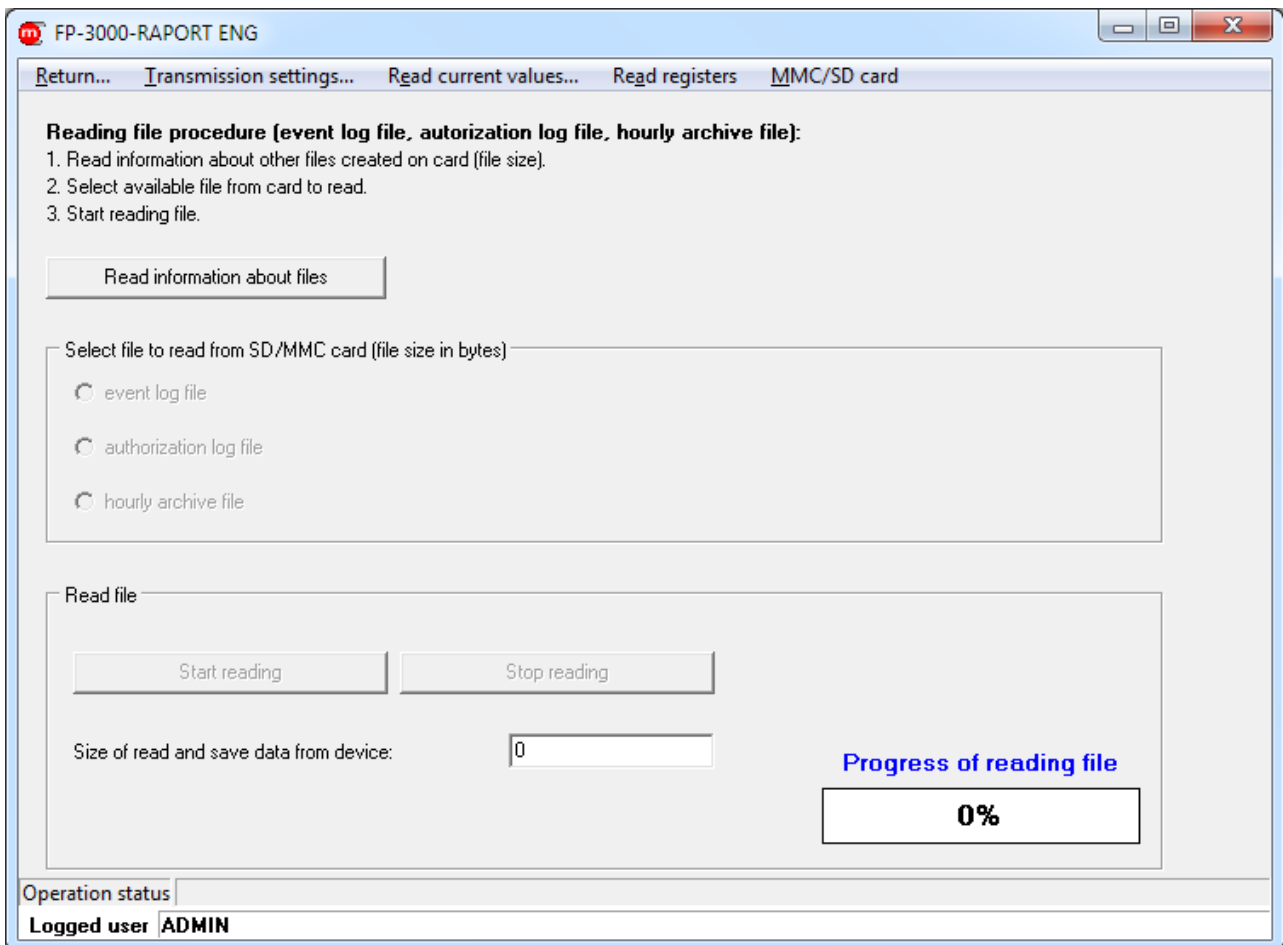



Fig. 6.12 Read files

6.6 Archive commands

- Window Fig. 6.1 button 
- Windows Fig. 6.5 ... Fig. 6.12: Menu → MMC/SD card → Control...

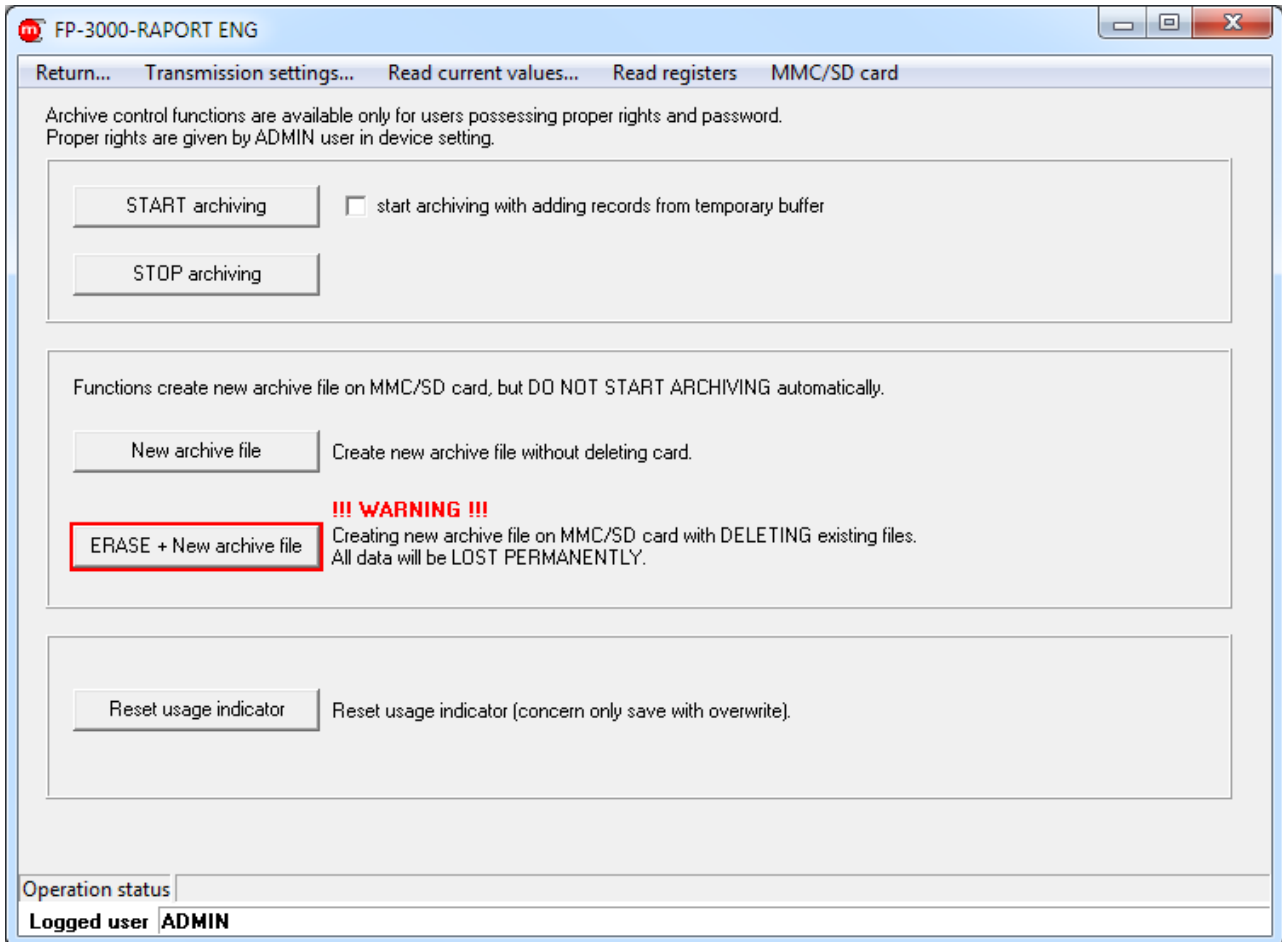


Fig. 6.13 Archive commands



7 Entity launching the product on European Union market

Manufacturer: METRONIC AKP s.c.
st. Żmujdzka 3
PL 31- 426 Kraków, Poland
Tel.: (+48) 12 312 16 80
www.metronic.pl

Vendor: